



# SCULPTURE & ART

**“Wine and Sculpture both age well”, David Ball.**

Winmark Wines Owner and Vigneron Karin Adcock is an avid collector of art and sculptures and David Ball’s monumental Biosis was the first of many sculptures to find their home at Winmark. Enjoy a Chardonnay tasting in the Cellar Door and explore the property to find spectacular sculptures reaching for the sky, whimsical installations and sculptures inspired by the Australian bush set against the natural landmarks of historical significance. Winmark is a place of remarkable beauty and unexpected discovery.

**WINMARK**  
WINES



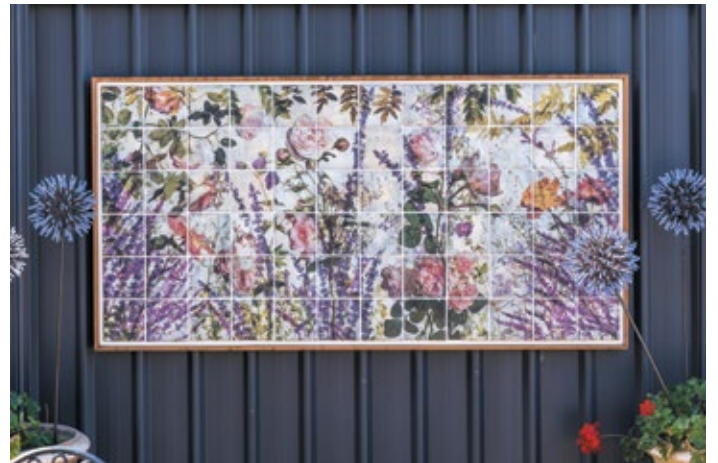
OPEN 7 DAYS



### **Biosis by David Ball**

David Ball created Biosis for the Winmark landscape. His sculpture is bound to earth yet reaches towards heaven in representation of our highest dreams.

“Biosis works both from and with the landscape,” David said. “It’s broad, it reaches out and sits in this big, beautiful valley surrounded by sandstone and cliffs that are themselves like sculpture.”



### **Autumn Saturation by Elisa Krey – Kreyfarer Ceramics**

Elisa’s ceramic mural preserves the stunning Winmark Perennial & Rose Garden designed by Paul Bangay OAM, in a creative interpretation of the garden through Autumn.

Incorporating photography to ‘fossilise’ images, they are kiln fired onto handmade stoneware tiles creating a one of a kind piece.

Kreyfarer studio was established in the Hunter Valley in 2018, with custom works available on request.



### **Fire’s Edge by Amanda Lockton**

The raw power and ferocity of nature, blackened bark, branches stripped bare of their foliage to reveal a new kind of beauty. Shape and form emerge from the destruction passed by the 2019/2020 Bushfires, to reveal a new beginning, new growth and life.

### **Wattle Season by Sharon Taylor**

A fun, zoomed in view of happy wattle branches. Sharon is inspired by the natural environment, the shapes, forms, colours and textures of the Australian landscape. She loves to make pieces that can be put back into the landscape which has inspired them.





### **Portals of Illusion by Erik Flygenring, Denmark**

Here we are. In the centre of the universe. In the navel of the world as we say in Denmark.

We look at 3 red portals placed to form a kind of train as you look through the line-up. We are the ones to imagine the walls and ceiling of this “train trunk”. It represents our life and we are the ones responsible for making the most of it.

As you get to the last portal you find a pot of gold. Equally large objects, at the same distance are depicted as the same size. If they are moved away from the observer, they are depicted smaller and if moved closer they are depicted larger – this is the theory we explore with Portals of Illusion.

### **Ceramic Lollipops – Celebrating Colours by Alain Vagh**

French ceramic artist Alain Vagh manufactures natural and luxury glazed terracotta for exclusive architectural conceptions. Winmark owner Karin Adcock picked up these stunning glazed works on a trip to Provence in 2019, and staying true to her innate artistic talents and ability to see beauty in all forms, created the Ceramic Lollipops installation at the Cellar Door.



### **Fight or Flight by Rode Vella**

The Slingshot – Once a Hunting Weapon. Man’s fight or flight response is triggered during the chase of a wild beast. Today a young boy’s toy. Child-like enthusiasm extinguishes as adulthood paves the way, evoking new fight or flight responses, in our new world. Face your fears, trust you’ll land on your feet. I choose flight.





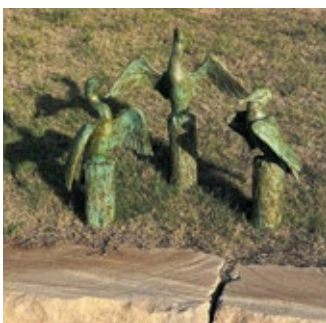
**Vessel #2**  
by Robert Owen

Owen created his minimalist sculpture Vessel #2 in 2004. First installed into Chifley Plaza, Sydney, it is now in its new home at Winmark. He has called his art a 'science of consciousness': a mathematical exploration of form and structure paired with poetic, meditative thought. Owen explores geometric shapes, space, light and colour that shift and transform with the viewers changing perspective. Colour is at the core of Owen's practice and here he has used his signature Ultramarine Blue: for him the colour of infinite presence.



**Memories of Pollyanna**  
by Eoin McSwan

Grafton NSW based sculptor and Blacksmith Eoin McSwan creates beautifully crafted works. Made with handmade bulleye glass, stainless steel and corten steel, Memories of Pollyanna represents positive energy and regrowth: the leaves fluttering in the breeze and the sunbeam shining through.



**Sun Seekers**  
by Patrice Cook

Patrice creates her beautifully realistic birds in ceramic with metallic painted finish. A recipient of the Bowral Sculpture Prize, her work is inspired by the patterns and textures in nature.

**Soft Landing**  
by Todd Robinson

Todd Robinson creates gravity inspired sculptures that are provocative, strange and engaging. Interested in the force of gravity and how it is an abiding force on all things, Robinson's sculptures elicit playful amusement or feelings of sadness through their paradoxical exploration of lightness and weight, hardness and softness, movement and stasis.

In Soft Landing a large, impossibly heavy balloon balances precariously on the edge of a concrete ramp instilling a sense of tension and ambiguity, playfully interacting with the landscape and people that are drawn to it.



## Delicate Balance by Michael Purdy

South coast NSW Sculptor Michael Purdy's strong interest in the environment and deep connection to the landscape is central to his artistic practice. Delicate Balance is a visual metaphor for the fragile relationship between humanity and the world we live in. It is simultaneously whimsical and serious.



## Scissor, Paper, Rock by Winmark

Winmark creation using the iron (Scissor) coming out of the old swimming pool, including large round oak timber balls (Paper) and placing both adjacent to a sandstone rock (Rock) in the landscape.

## Bronze Flower by Ed Hayes

This Bronze Flower is one part of a three-part installation placed at the National Sculpture Forum in the '90s and later displayed in front of the National Library of Australia. The theme was an expulsion from the Garden of Eden. The three bronzes were split after the event with Bronze Flower now residing at Winmark.



## Celest by David Ball

Celest is a stargate. Its elevated form lures the viewer to gaze at a different sky, through the tension and contrast of the frail architecture that surrounds them.

Ball's work is derived from forms observed in nature. From the molecular to celestial then distilled, simplified and imagined.



# SCULPTURES FOR SALE

FOR SALE  
\$20,000



FOR SALE  
\$220 each



## Don't Lose Your Grip by Stephen Paul Coburn

The ride to Wollombi is exhilarating; winding roads over hills, valleys, Lemmings Corner and Murray's Run – all dangerous. Riders lose control and SOME lose their lives. Since moving to Wollombi the sound of sirens has become familiar.

Spread word on the trip:

**"Go easy on the curves, don't lose your grip!"**

## A field of Aggies by Jim Hamilton

The Agapanthus sculptures are made of steel and painted to represent the mauve and white flowers. They never die and flower all year round. They were created in a time of intense drought in regional NSW.

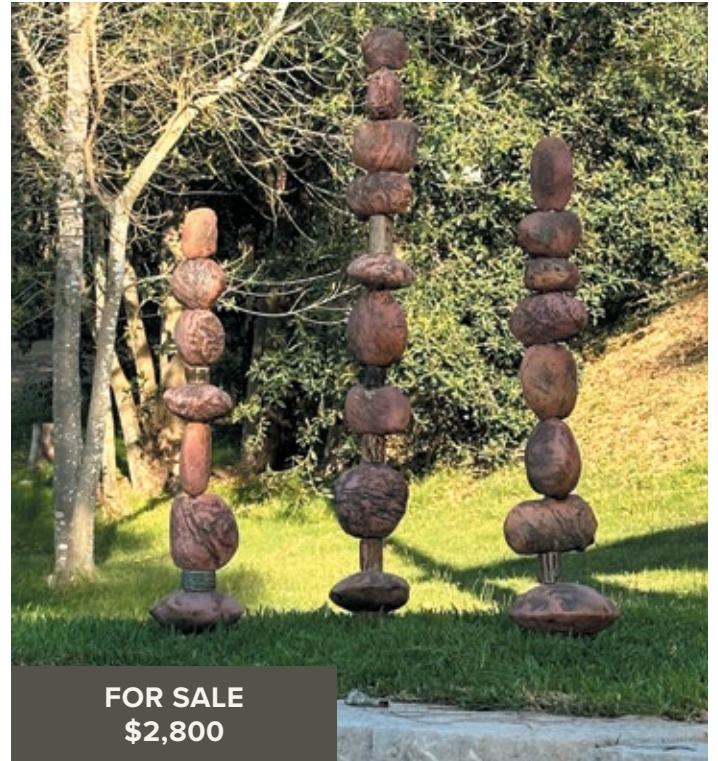
**FOR SALE**  
**\$4,900**



**Georgia**  
**by Lisa Hölzl**

Ceramic sculptor Lisa Hölzl works from the Bakehouse Studio in Marrickville. Her three dimensional totem piece Georgia is inspired by the abstract landscape, bones and blooms of Georgia O'Keefe's paintings.

Each piece of the sculpture is individually created and assembled by Lisa herself.



**FOR SALE**  
**\$2,800**

**Bush Treasures**  
**by Sharon Taylor**

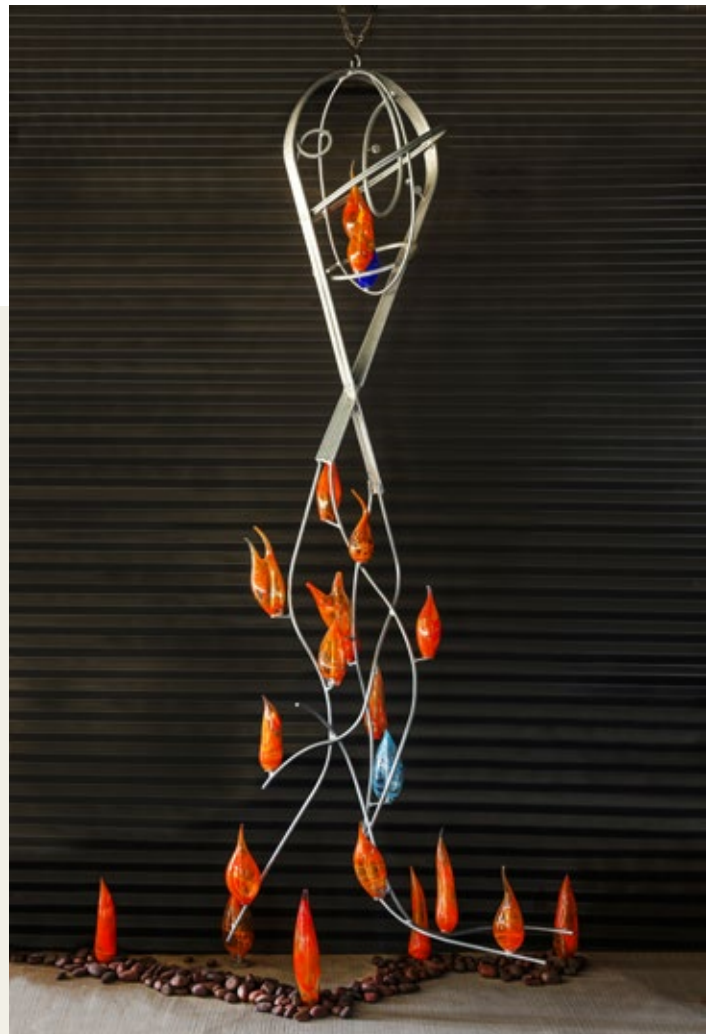
Artist Sharon Taylor found ceramics while studying Fine Arts as a painter. Her clay sculptures are inspired by the shapes, forms, colours and textures of the Australian landscape.

In 'Bush Treasures' rock formed shapes impressed with nature's textures are stacked as markers of respect and beauty.

**FOR SALE**  
**\$9,000**

**Fire Fox**  
**by Kayo Rowe**

The mystery of the forest, we all fear to have fires in the forest, as human, always have fascination of fire with fear. I am going to create a wonder of fire in the forest. The Japanese folktale of the kitsunebi (Fox Fire) is in places where there'd be no presence of fire, mysterious flames would appear in a line that have gone out sometimes even appearing in yet another place. Generally the colour of the fire is red or orange, but there have been witnesses that have seen blue. It is often said that foxes trick humans, so likewise, the kitsunebi would light up places where there are no roads and make the humans lose their way. In late 15th century, the Honchō-Shokkan book contains a statement about how foxes would use withered trees on the ground to make fires. This "fox" does not refer to the animal, but instead means "withered" or "rotten and discoloured," and seeing how "fox fire" refers to the fire of withered trees and the light of hypha and mushroom roots that cling to withered trees could be seen to refer to the lights, but there are many that still go unexplained.



# SCULPTURES FOR SALE

**FOR SALE**  
**\$12,320**

## **The Shadow Lines** **By Tania McMurtry**

The Shadow Lines cast by an immutable sun reveal and conceal the rustic construction exposing the temporal quality in the work. Integral to the sculpture's connection with place – shadows and the viewers gaze move through space and time.

**“Shadows like time, are both tangible and intangible at any given moment or realm of perspective.”**

Hitesh S.Vaghani



**FOR SALE**  
**\$16,000**

## **Reasons to be Cheerful** **by Margarita Sampson**

Margarita drew inspiration for this work from sitting in the garden during lockdowns, watching the bees on the brassicas and wondering at the perfect symmetry which gave the bees access to every flower. Time spent in the garden helped provide resilience and quietude in connection to growing things.





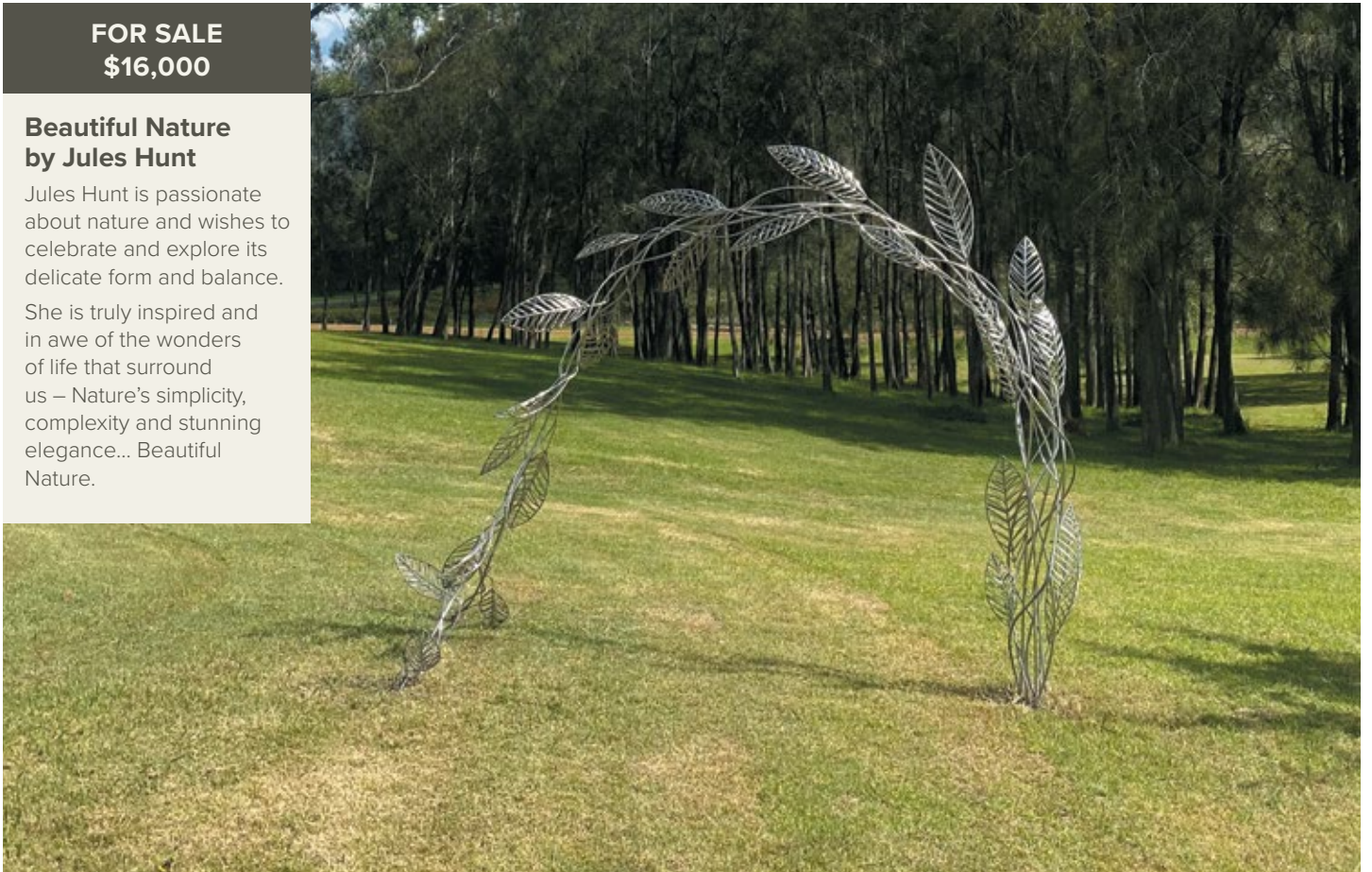
# SCULPTURES FOR SALE

**FOR SALE**  
**\$16,000**

## **Beautiful Nature by Jules Hunt**

Jules Hunt is passionate about nature and wishes to celebrate and explore its delicate form and balance.

She is truly inspired and in awe of the wonders of life that surround us – Nature's simplicity, complexity and stunning elegance... Beautiful Nature.



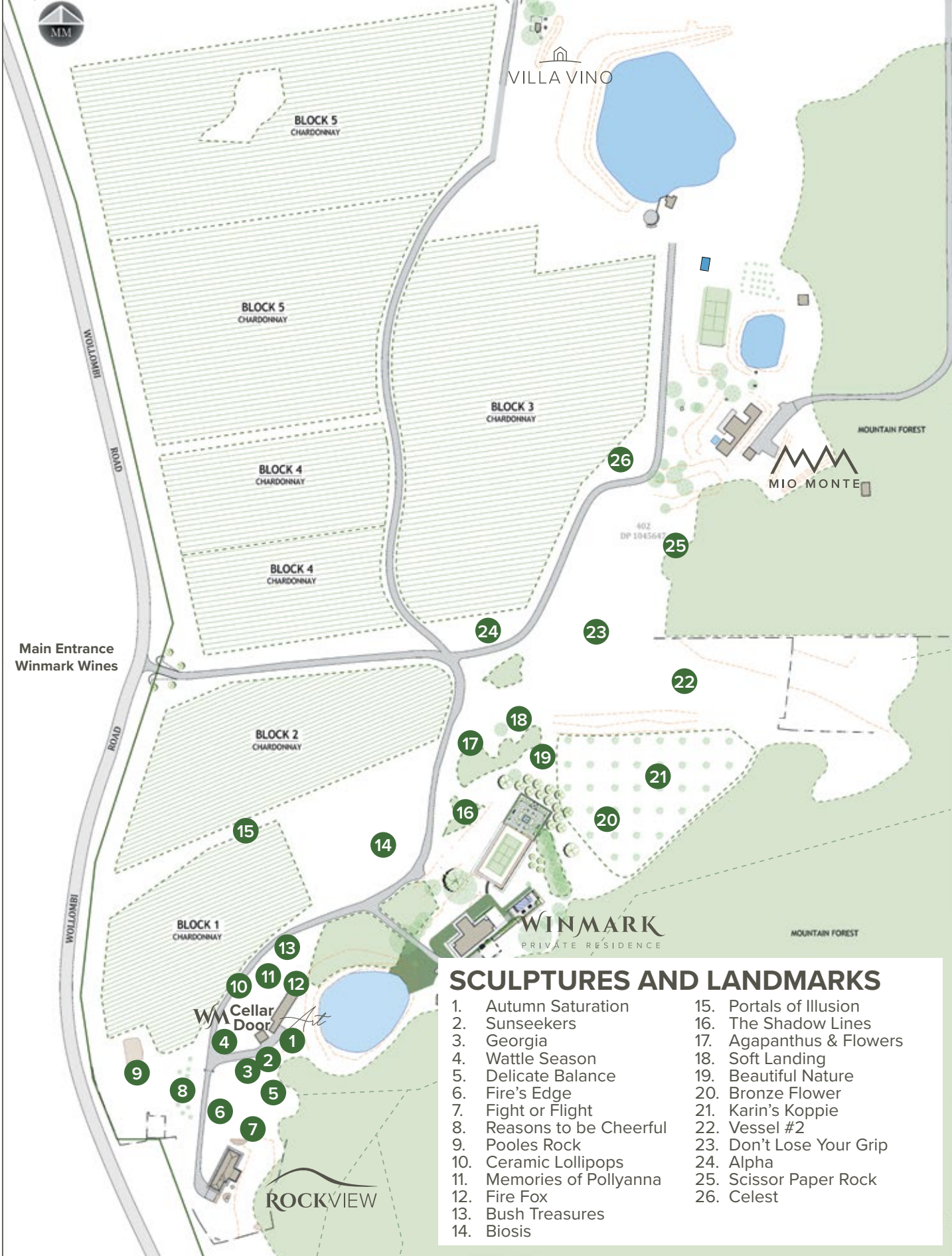
**FOR SALE**  
**\$18,000**

## **Alpha by Mark Niglia**

'Alpha' An assertive stance portraying dominance to protect what has meaning in life. Having an image of a bigger self and actively working to bring it to fruition. Sculpted as a strong figure from distorted metal rod and sealed in matte black finish. Alpha walks a unique path.



Entry Mio Monte 189 Wollombi Rd



### SCULPTURES AND LANDMARKS

- |                           |                          |
|---------------------------|--------------------------|
| 1. Autumn Saturation      | 15. Portals of Illusion  |
| 2. Sunseekers             | 16. The Shadow Lines     |
| 3. Georgia                | 17. Agapanthus & Flowers |
| 4. Wattle Season          | 18. Soft Landing         |
| 5. Delicate Balance       | 19. Beautiful Nature     |
| 6. Fire's Edge            | 20. Bronze Flower        |
| 7. Fight or Flight        | 21. Karin's Koppie       |
| 8. Reasons to be Cheerful | 22. Vessel #2            |
| 9. Pooles Rock            | 23. Don't Lose Your Grip |
| 10. Ceramic Lollipops     | 24. Alpha                |
| 11. Memories of Pollyanna | 25. Scissor Paper Rock   |
| 12. Fire Fox              | 26. Celest               |
| 13. Bush Treasures        |                          |
| 14. Biosis                |                          |

Thank you for respecting the privacy of guests staying in the guest houses.

T: 0499 079 260 | 229 Wollombi Road, Broke NSW 2330, Australia  
E: info@winmarkwines.com.au | @winmarkwines | winmarkwines.com.au

**WINMARK**  
W I N E S

AUG 2024